

MARINA TECHNOLOGIES REPLACES DOCKS AT HARRIS BAY YACHT CLUB



Harris Bay Yacht Club includes a 271-slip marina – the largest marina on Lake George in Cleverdale, NY. The Yacht Club was established in 1983. The old timber dock system required significant maintenance, repairs, and board & float replacements over the years. Now they have finally replaced them with all new docks from Marina Technologies (MTI).

“They looked at new timber docks and aluminum-framed docks, says Bob Berry from Marina Technologies, and were surprised to see that the aluminum docks were priced similarly to the wood docks, but had many more benefits and none of the maintenance! After a long and detailed analysis of the different dock systems, they decided on Marina Technologies aluminum dock systems, because it had the most features and advantages for the price, which made it the best investment for the Yacht Club”.

“The new docks will be MTI Model S-190 Aluminum Docks, with our proprietary composite decking, polyethylene floats, aluminum reinforced PVC fenders and Inflatable (pressure adjustable) corner bumpers, dual top-access utility troughs, flexible and silent reinforced rubber dock connections, and adjustable 12” powder-coated aluminum cleats with stainless steel backing plates” reports Richard Murray – MTI’s President.

“Our utility troughs were another big-deal, says Richard. The new docks have dual top-access troughs with 7 ft long aluminum cover panels, which makes installing, accessing, and maintaining utilities simpler and faster compared to removing deck boards. We also have a large, separate central utility trough on the fuel dock for fuel lines”, reports Richard. There will be a floating fuel office and ice machine at the end of the fuel dock.



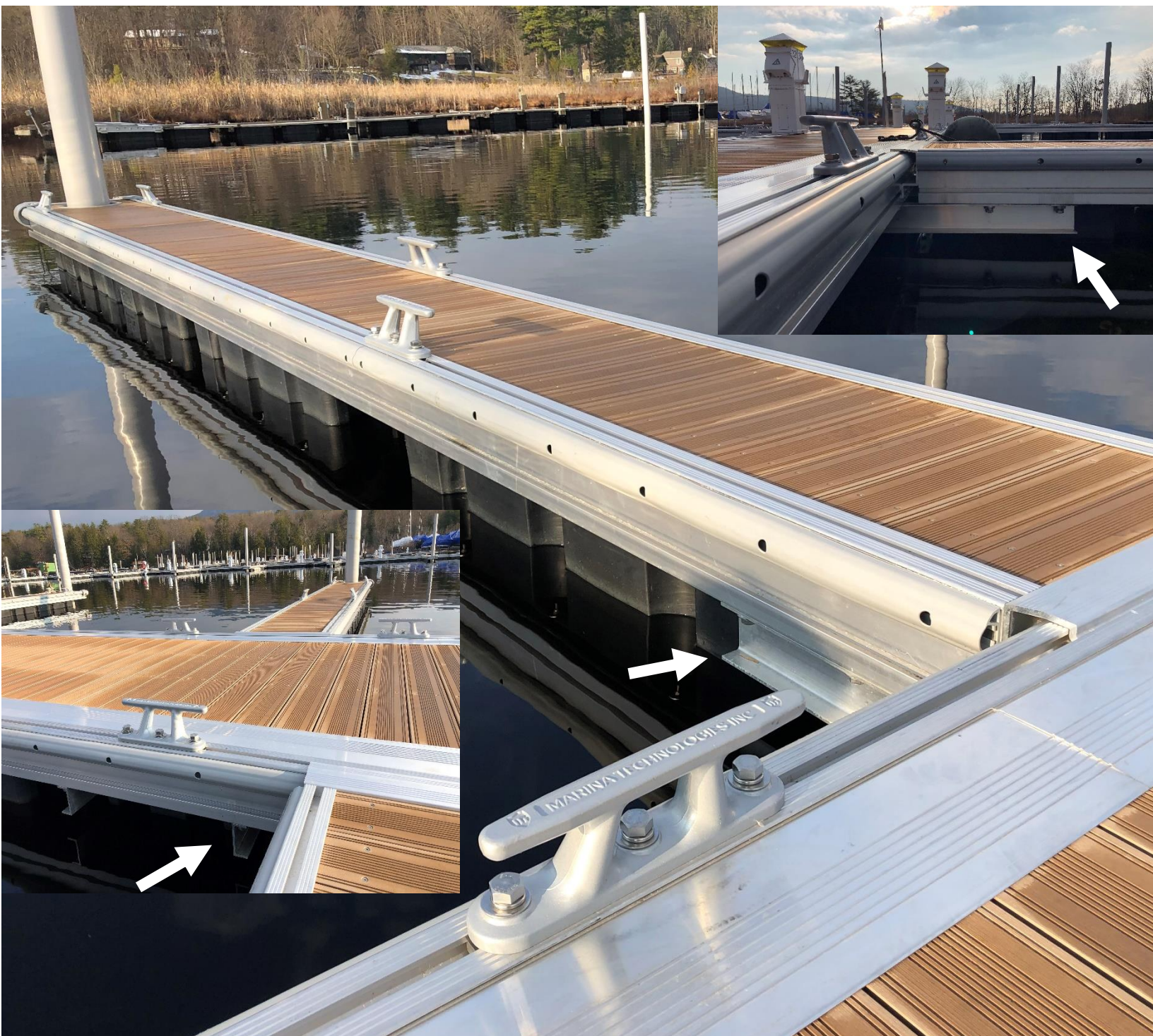
Dock and pile Installation is now completed, and utilities are being finalized. 10-inch PVC piles were used to anchor the docks, which will provide superior performance with minimal maintenance for decades, says Berry.



Many of the finger piers are two-ft wide, but with MTI's unique "under-beam" mounting system, they are extremely stable and easy to walk on. The "under-beams" cross under main walkways and extend under the finger piers for maximum strength and stability.

The docks carry full utilities throughout the marina, including 30A & 50A electric, lighting, fuel pumps, potable water, pump-out, and Wi-Fi.

AP Reale Marine & Civil Contracting, based in Ticonderoga, NY, performed the marine work for the project, including demolition and disposal of the old docks and installation of the new docks, anchor piles, and utilities.



The new marina will be open for spring, 2023. The docks will remain in the water throughout the winters, where they freeze-in-place with no problems.

Please contact us to learn more about why Marina Technologies may be the best option for your next waterfront project.

910-262-6061 - USA

514-512-0403 - CANADA

www.marinatechnologies.com

